

RPL36 Antibody (N-term)
Affinity Purified Rabbit Polyclonal Antibody (Pab)
Catalog # AP9632a

Specification

RPL36 Antibody (N-term) - Product Information

Application	WB,E
Primary Accession	Q9Y3U8
Other Accession	Q66KU4 , P39032 , Q98TF6 , Q3T171 , NP_378669 , P47964
Reactivity	Human
Predicted	Bovine, Chicken, Mouse, Rat, Xenopus
Host	Rabbit
Clonality	Polyclonal
Isotype	Rabbit IgG
Calculated MW	12254
Antigen Region	14-42

RPL36 Antibody (N-term) - Additional Information

Gene ID 25873

Other Names

60S ribosomal protein L36, RPL36

Target/Specificity

This RPL36 antibody is generated from rabbits immunized with a KLH conjugated synthetic peptide between 14-42 amino acids from the N-terminal region of human RPL36.

Dilution

WB~~1:1000

E~~Use at an assay dependent concentration.

Format

Purified polyclonal antibody supplied in PBS with 0.09% (W/V) sodium azide. This antibody is purified through a protein A column, followed by peptide affinity purification.

Storage

Maintain refrigerated at 2-8°C for up to 2 weeks. For long term storage store at -20°C in small aliquots to prevent freeze-thaw cycles.

Precautions

RPL36 Antibody (N-term) is for research use only and not for use in diagnostic or therapeutic procedures.

RPL36 Antibody (N-term) - Protein Information

Name RPL36

Function Component of the large ribosomal subunit (PubMed:[12962325](#), PubMed:[23636399](#), PubMed:[25901680](#), PubMed:[25957688](#), PubMed:[32669547](#)). The ribosome is a large ribonucleoprotein complex responsible for the synthesis of proteins in the cell (PubMed:[12962325](#), PubMed:[23636399](#), PubMed:[25901680](#), PubMed:[25957688](#), PubMed:[32669547](#)).

Cellular Location

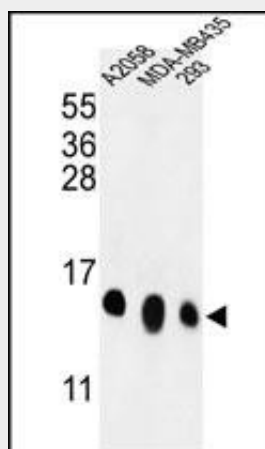
Cytoplasm, cytosol. Cytoplasm Note=Detected on cytosolic polysomes (PubMed:25957688) {ECO:0000250|UniProtKB:Q2YGT9, ECO:0000269|PubMed:25957688}

RPL36 Antibody (N-term) - Protocols

Provided below are standard protocols that you may find useful for product applications.

- [Western Blot](#)
- [Blocking Peptides](#)
- [Dot Blot](#)
- [Immunohistochemistry](#)
- [Immunofluorescence](#)
- [Immunoprecipitation](#)
- [Flow Cytometry](#)
- [Cell Culture](#)

RPL36 Antibody (N-term) - Images



Western blot analysis of RPL36 Antibody (N-term) (Cat. #AP9632a) in A2058, MDA-MB435, 293 cell line lysates (35ug/lane). RPL36 (arrow) was detected using the purified Pab.

RPL36 Antibody (N-term) - Background

Ribosomes, the organelles that catalyze protein synthesis, consist of a small 40S subunit and a large 60S subunit. Together these subunits are composed of 4 RNA species and approximately 80 structurally distinct proteins. This gene encodes a ribosomal protein that is a component of the 60S subunit. The protein belongs to the L36E family of ribosomal proteins. It is located in the cytoplasm. Transcript variants derived from alternative splicing exist; they encode the same protein. As is typical for genes encoding ribosomal proteins, there are multiple processed pseudogenes of this gene dispersed through the genome. [provided by RefSeq].

RPL36 Antibody (N-term) - References

Gazda, H.T., et al. Am. J. Hum. Genet. 83(6):769-780(2008)

Ewing, R.M., et al. Mol. Syst. Biol. 3, 89 (2007)
Oh, J.H., et al. Mamm. Genome 16(12):942-954(2005)